

GRIDX

Science Based Company Builder



Agencia de Inovação da UNICAMP
2022-09

-STRICTLY CONFIDENTIAL-



SUSTAINABLE
DEVELOPMENT
GOALS





Tempo



SUSTAINABLE
DEVELOPMENT
GOALS





Sequenciação

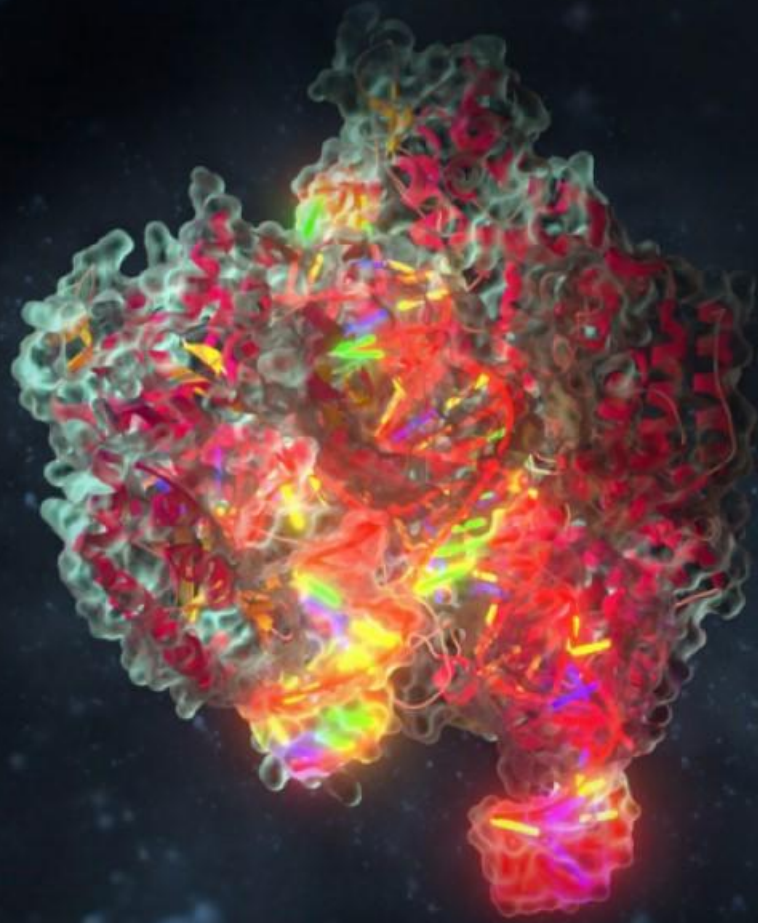


Edição

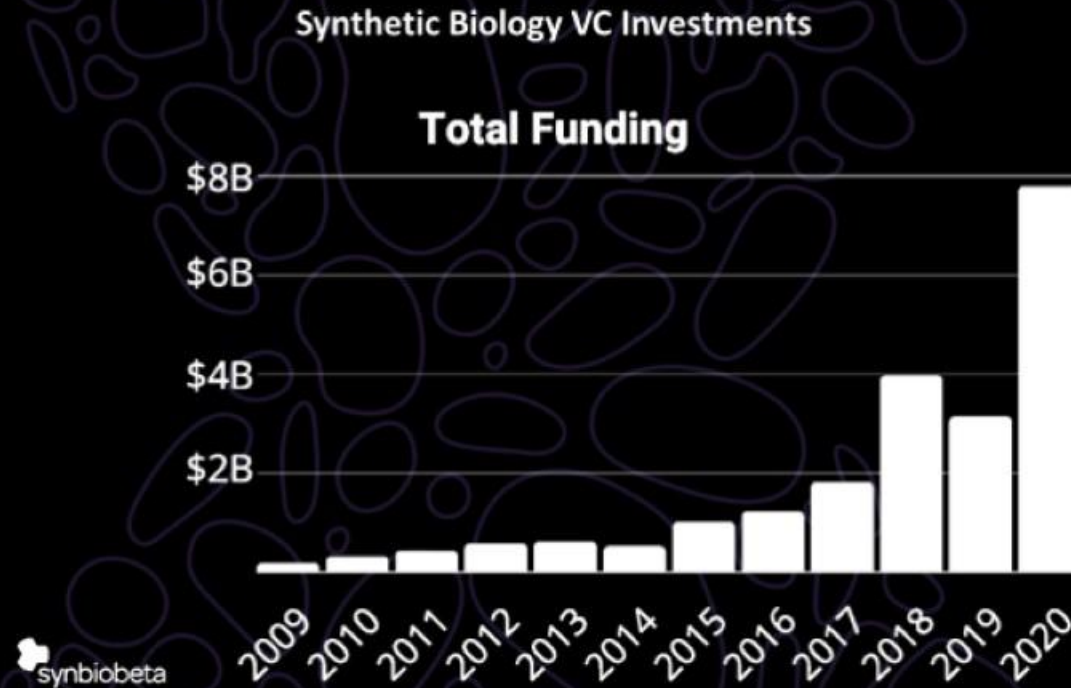


**Digitalização
e outros...**

**O momento
perfeito**



No Mundo o Capital Empreendedor e a Ciência





...e na América Latina

Ao redor de **200.000** pesquisadores

Talento **científico** e **empreendedor**

Biodiversidade

A map of Latin America, including Mexico, Central America, and South America, is shown in a light blue color against a dark background. The map is positioned on the left side of the slide, with the text elements to its right.

...e na América Latina

Ao redor de **200.000** pesquisadores

Talento **científico** e **empreendedor**

Biodiversidade

Ex: Brasil captura de valor < 2%



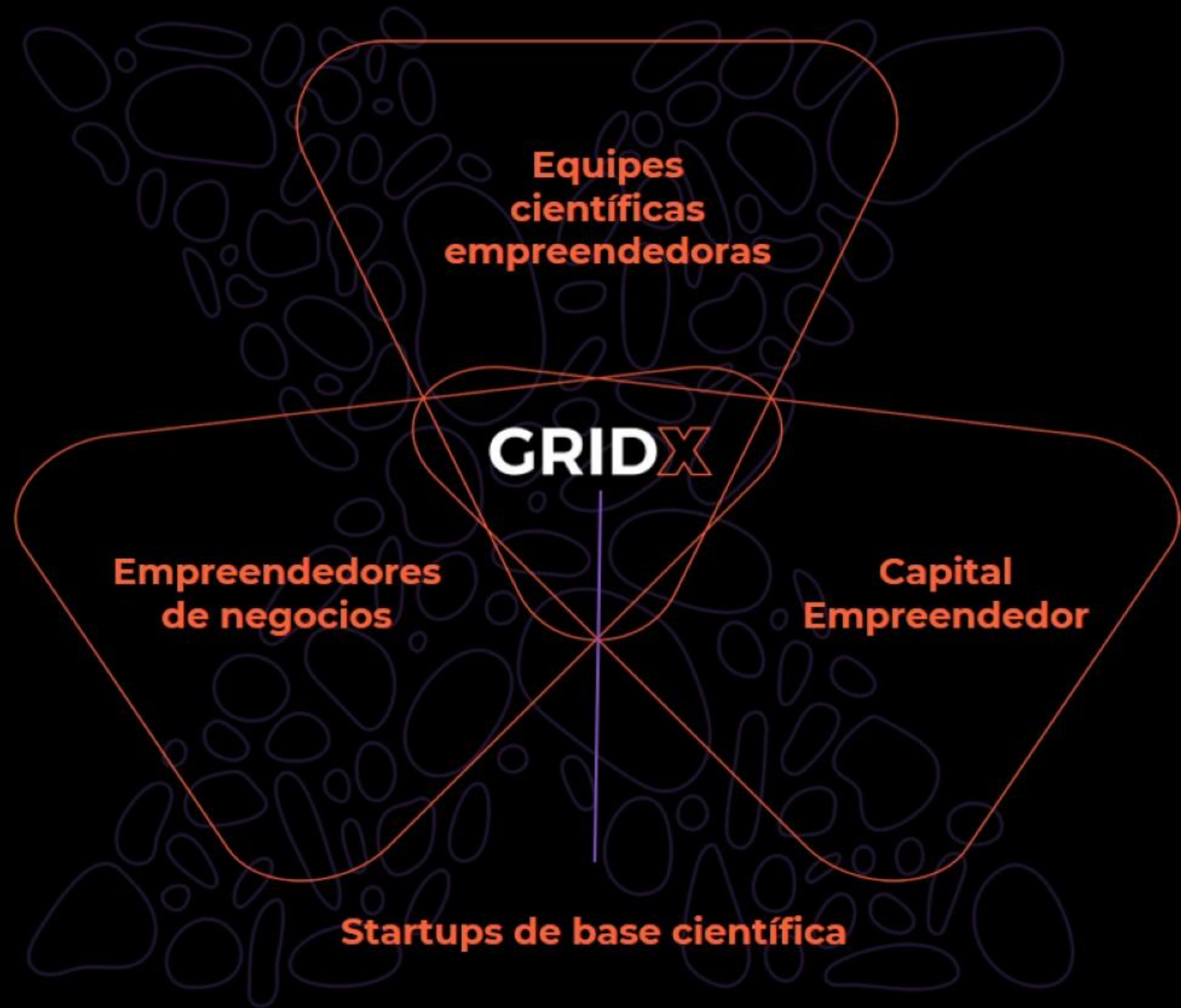
GRIDX

**Equipes
científicas
empreendedoras**

GRIDX

**Empreendedores
de negocios**

**Capital
Empreendedor**



**Equipes
científicas
empreendedoras**

GRIDX

**Empreendedores
de negócios**

**Capital
Empreendedor**

Startups de base científica

Capital Empreendedor para a Ciência

Desenvolvimentos científicos de impacto

- Tempo
- Risco
- Desenvolvimentos escalonados
- Demanda de \$

Capital empreendedor

- 10 anos
- Aceita risco
- Investimentos escalonados
- Capital disponível

Comparamos nosso modelo de *company building* à uma metamorfose



1



EXPLORE

Indo a fonte

2



IGNITE

Tranformando
ciência em
startups

3



GROW

Conectando as
startups com o
mundo

EXPLORE



SCIENCE ENTREPRENEURS

Apply to
GRIDX Explore
For Scientific
Projects



We select **20** scientific
projects per batch
to work with



EXPLORE



SCIENCE ENTREPRENEURS

Apply to
GRIDX Explore
For Scientific
Projects



We select **20** scientific
projects per batch
to work with

EXPLORE



SCIENCE ENTREPRENEURS

Apply to
GRIDX Explore
For Scientific
Projects



We select **20** scientific
projects per batch
to work with



BUSINESS ENTREPRENEURS

Apply to GRIDX
Explore Process
for Business
Entrepreneurs



We select **20** business
entrepreneurs per
year to team them
up with scientists

EXPLORE



SCIENCE ENTREPRENEURS

Apply to
GRIDX Explore
For Scientific
Projects



We select **20** scientific
projects per batch
to work with



BUSINESS ENTREPRENEURS

Apply to GRIDX
Explore Process
for Business
Entrepreneurs



We select **20** business
entrepreneurs per
year to team them
up with scientists



EXPLORE



SCIENCE ENTREPRENEURS

Apply to
GRIDX Explore
For Scientific
Projects



We select **20** scientific
projects per batch
to work with



BUSINESS ENTREPRENEURS

Apply to GRIDX
Explore Process
for Business
Entrepreneurs



We select **20** business
entrepreneurs per
year to team them
up with scientists



IGNITE



3 Month Program to
match business
and scientific
entrepreneurs



We select **10** projects
per batch and work
together with them in
an investment offer



USD 200K
Investment



GROW



**WE PARTNER TO
IMPACT THE
WORLD**

Portfolio

42 Empresas Investidas

Desde 2017

Setores diversos



Saúde
27%



Alimentos
23%



Ferramentas
17%



Diagnóstico
13%



Agro
20%

Impacto



Biodiversidade
e Recursos
Naturais



Captura de
Carbono



Redução custos
de saúde



Redução de
emissões



Acesso a
alimentos
saudáveis



Descentralização
saúde

+500

Pessoas trabalhando

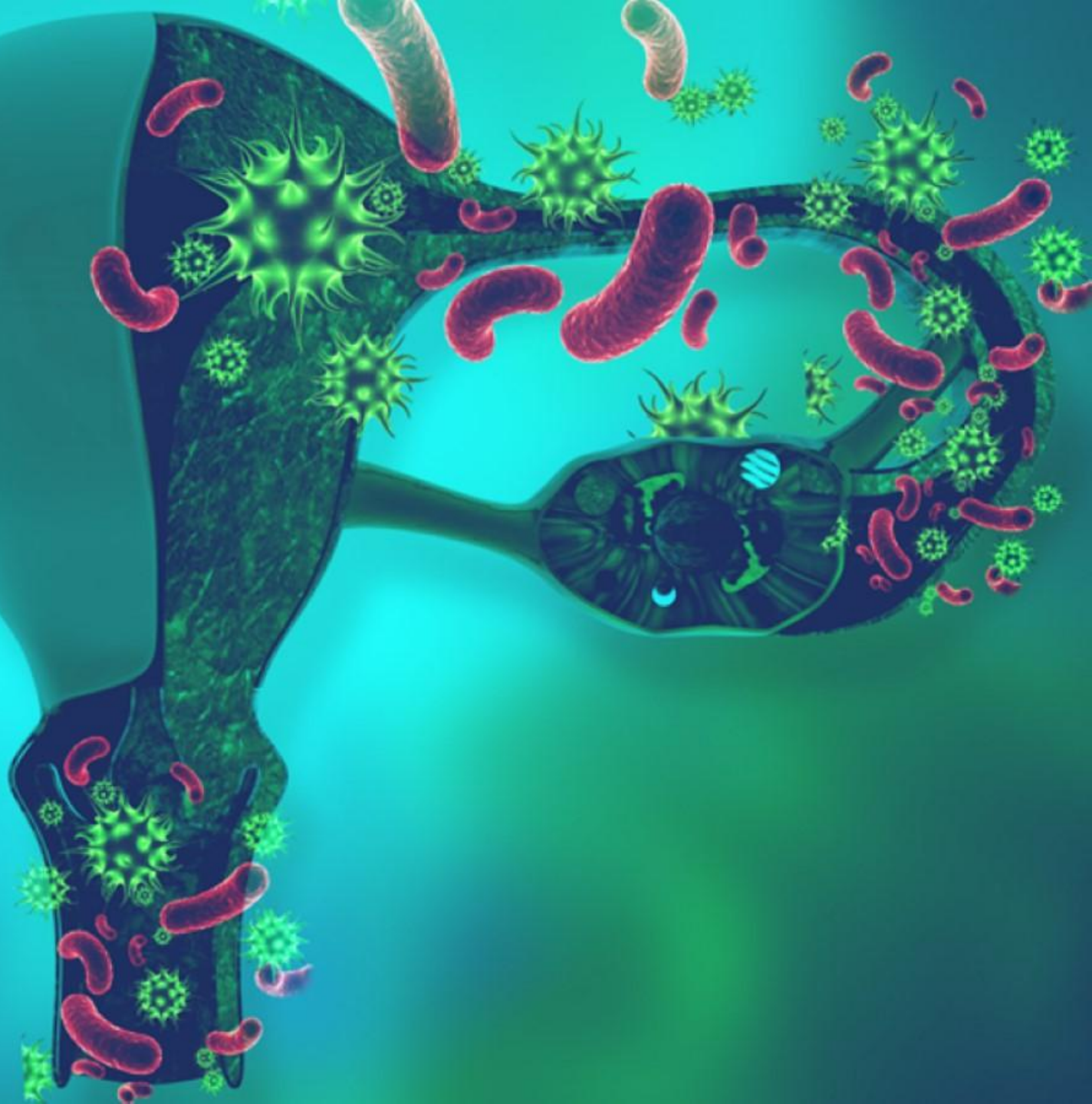
60%

Fundadas por mulheres





microgenesis




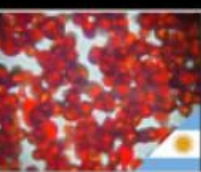
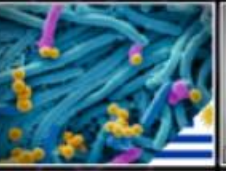


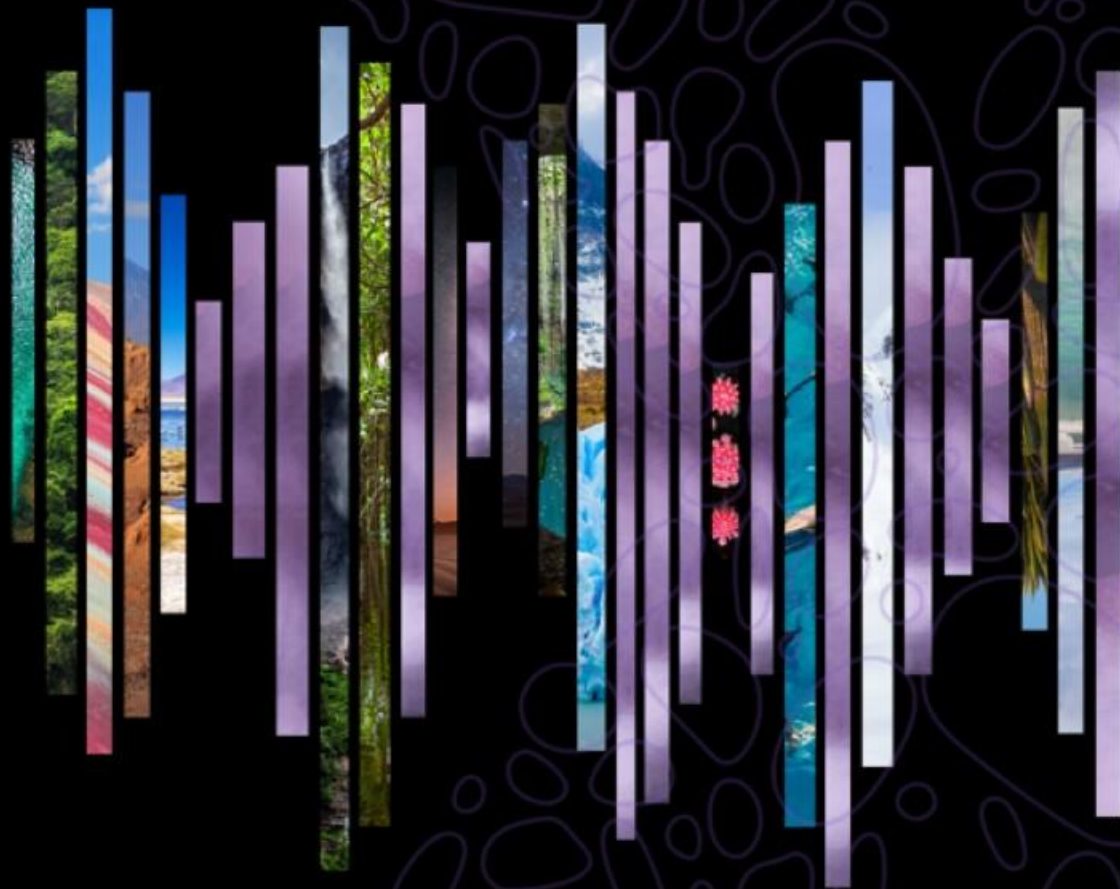
 naturannova



 BreakPET



| | | | | | | | | | | |
|--|---|---|---|--|---|---|---|---|---|---|
|  |  |  |  |  |  |  |  |  |  |  |
| Stämm Laminar-fluid bioreactor | Beeflow Smart pollination | Aplife Biotech Biosensor discovery platform | Bitgenia Genomics to improve healthcare and lifestyle | Alytix Bacteriophages to fight bacterial infections | CASPR CRISPR technologies to democratize diagnostics | Feedvax Oral vaccines for aquaculture | ZEV Biotech Molecular diagnostics for emerging markets | Cell Farm Cultured meat | MZP Laminar-fluid bioreactor | Algaebio+ Healthy microalgae compounds |
|  |  |  |  |  |  |  |  |  |  |  |
| Tomorrow Foods Plant-based protein systems for food industry | Microgenesis Non-invasive fertility | Michroma Fungal bio-factories for next-gen of ingredients | Syocin Synthetic biology for pest control | Cryosmetics Personalized microbiome-friendly cosmetics | Enteria Exploring your gut microbiome | Einsted Carbon dioxide capture network | Fecundis Sperm capacitation for fertility | Hiamet New biological additives to improve bio-digestion | OncoPrecision Democratizing access to precision oncology | Puna Bio Extremophiles for a sustainable agriculture |
|  |  |  |  |  |  |  |  |  |  |  |
| ArgenTAG Democratizing long-read sequencing applications | Gisens Synthetic biology for pest control | Elytron Digitalization of diagnostics with nanotechnology | Nanogrow Nanobodies for dermatology | BreakPET Sustainable enzymatic process to depolymerize PET | New Organs Humanized organs from pigs | Bioeutectics Natural and biodegradable solvents | Food4You Precision fermentation for plant-based matrix | Nanotransfer Delivery system for gene therapies | Plamic Nanomedicines with microfluidics | Sylvarum Accelerating plant growth with electrostimulation |
|  |  |  |  |  |  |  | | | | |
| Kresko RNATech Regulatory RNAs for nutraceuticals | Zavia Bio Designer molecules to adapt crops to adversity | Naturannova Plant-based flavor substitutes | Nat4Bio Organic coating for post-harvest fruit protection | Embryoxite Personalized diagnosis of embryo for IVF | BioPlaster Bioplastics from sargassum | BSafe Biotech RNA-based biopesticides | | | | |



...e o que vem por ai

3
anos

75
empresas

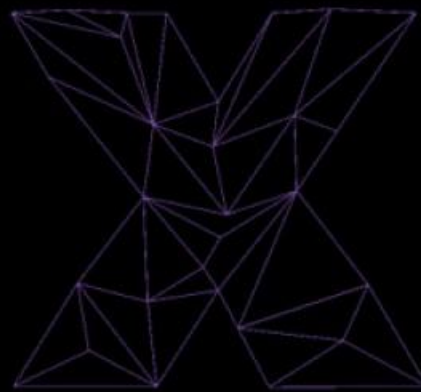
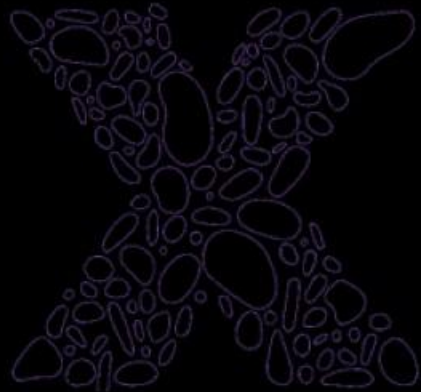


...buscamos
75 Equipes científicas
empreendedoras

Ciência
original

75 Empreendedores
de negocios

Obrigado!...



Francisco Salvatelli

✉ fsalvatelli@gridexponential.com

☎ +55 11 93295 1140

🌐 www.gridexponential.com

This presentation has been prepared by GRIDX (the "Company") and is general background information about the Company's activities at the date of this presentation. The information in this presentation is provided in summary form only and does not purport to be complete. This presentation does not contain all the information that is or may be material to investors or potential investors and should not be considered as advice or a recommendation to investors or potential investors in respect of the holding, purchasing or selling of securities or other financial instruments and does not take into account any investor's particular objectives, financial situation or needs. By attending the presentation or by reading the presentation slides you agree to be bound as follows: This presentation has been made to you solely for information purposes. This presentation may be amended and supplemented as the Company sees fit, may not be relied upon for the purpose of entering into any transaction and should not be construed as, nor be relied on in connection with, any offer or invitation to purchase or subscribe for, underwrite or otherwise acquire, hold or dispose of any securities of the Company, and shall not be regarded as a recommendation in relation to any such transaction whatsoever. The contents of this presentation should not be considered to be legal, tax, investment or other advice, and any investor or prospective investor considering the purchase or disposal of any securities of the Company should consult with its own counsel and advisers as to all legal, tax, regulatory, financial and related matters concerning an investment in or a disposal of such securities and as to their suitability for such investor or prospective investor. This presentation and its contents are confidential and proprietary to the Company, and no part of it or its subject matter may be reproduced, redistributed, passed on, or the contents otherwise divulged, directly or indirectly, to any other person (excluding the relevant person's professional advisers) or published in whole or in part for any purpose without the prior written consent of the Company. If this presentation has been received in error it must be returned immediately to the Company. The communication of this presentation may be restricted by law; it is not intended for distribution to, or use by any person in, any jurisdiction where such distribution or use would be contrary to local law or regulation. This presentation is not directed to or intended for distribution, or transfer, either directly or indirectly to, or use by, any person or entity that is a citizen or resident or located in any locality, state, country or other jurisdiction where such distribution, transfer, publication, availability or use would be contrary to law or regulation or which would require any registration or licensing within such jurisdiction.



BSAFE BIOTECH



Paulo Ribolla



Financiamento

Pesquisa

Fundos públicos

Pesquisa

Fundos públicos

Empreendimentos de base científica

PMEs

- Fundos públicos
- Créditos bancários
- FFF
- Vendas

Startups

- Investidores de capital empreendedor

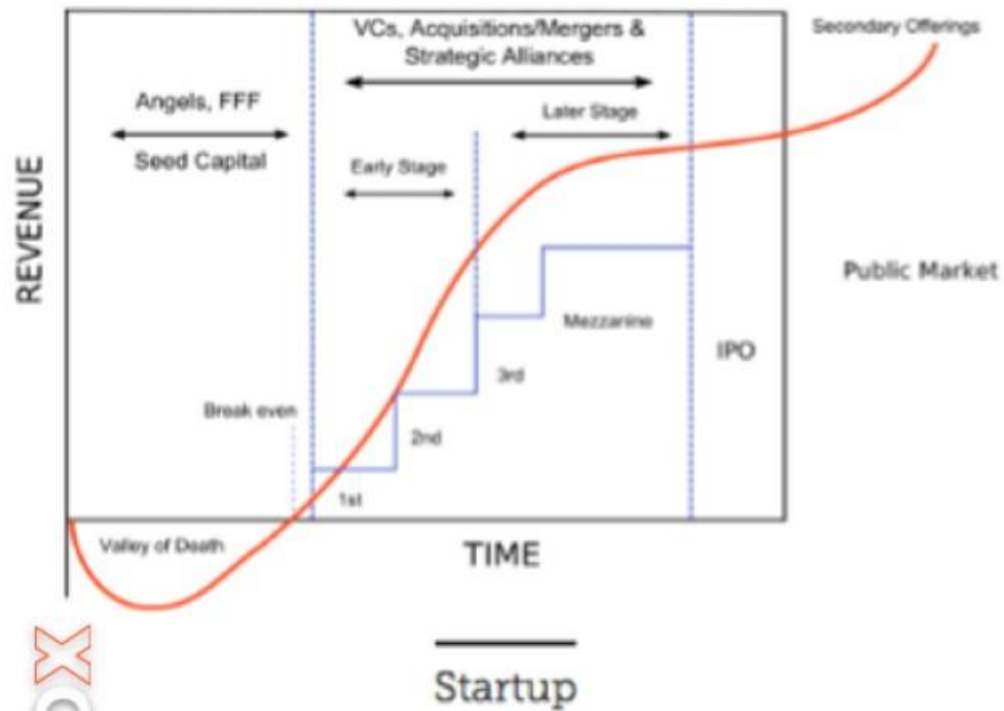


Syocin
»» BIOTECH

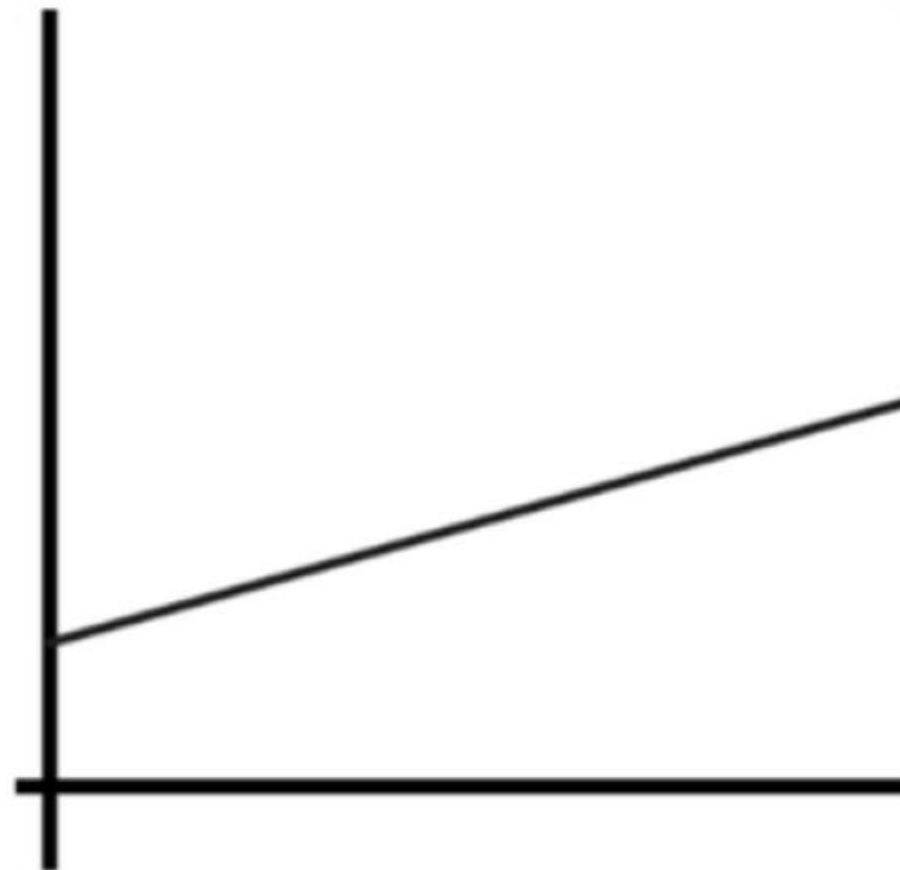


SYLVÆRUM

Startup Financing Cycle



GRIDX



Pyme



ZAVIA

BIO



**PIG
ORGAN**
FOR TRANSPLANT

 **NEW
ORGANS**